

**WELLSBORO AREA SCHOOL DISTRICT**  
**Field Trip Transportation Request Form**

1. Teacher: <u>Mr &amp; Mrs Mack</u>	School: <u>WAHS</u>
2. No. of Students: <u>TBA</u> Adults: <u>TBA</u>	Class or Organization: <u>Culinary Travel Club</u>
3. Date of Trip: <u>Jun-21</u> Destination: <u>Northern Italy/ EF tours</u>	Total Miles: _____
4. Estimated departure time: <u>3:00pm</u>	From: <u>WAHS</u>
5. Estimated return time (arrival in the district): <u>7pm</u>	
6. Meal Plans (if applicable): <u>Included in the Tour price</u>	
7. Is school bus transportation required?	<input type="radio"/> Yes <input checked="" type="radio"/> No How many? _____
8. Will a coach bus be required?	<input checked="" type="radio"/> Yes <input type="radio"/> No How many? <u>1</u>
9. Are private cars to be used?	<input type="radio"/> Yes <input checked="" type="radio"/> No If yes, how many cars will be used? _____
Who are the drivers? _____	
Are all of the cars to be used covered by at least \$50,000 - \$100,000 (preferably \$100,000 - \$300,000) of insurance, and do you have proof ? <input type="radio"/> Yes <input checked="" type="radio"/> No	
10. The district is requested to pay \$ <u>0</u> out of the total cost of \$ <u>\$4,145 Per Student</u>	
Account Code Number _____	
11. If the district is not expected to pay all of the costs, what other funds are going to be used?	
<u>Students will Fundraise and put up their own funds</u> Account Code, if appropriate: _____	
Notes: <u>The List of students and chaperones will be provided when we get closer to the trip date.</u>	
12. <input type="checkbox"/> For overnight field trips, a list of Students and Chaperones is attached.	
13. <input checked="" type="checkbox"/> A brief itinerary/description of trip is attached.	
14. Signature of Teacher: _____	Date Submitted: <u>9/18/19</u>
15. Principal's Approval: _____	Date: <u>9/19/19</u>
16. Superintendent's Approval: <u>Dr. Brenda M. Green</u>	Date: <u>9/30/19</u>
17. Received by Transportation Coord.: <u>1</u>	Date: _____
18. Estimated Cost: _____ Bus Contractor: _____	

**Distribution:**

- ☐ Original - Superintendent/Transportation Coordinator  
☐ Copy 1 - Business Office (SS, FS, AA)

- ☐ Copy 2 - Building Secretary  
☐ Copy 3 - Faculty Member



***Educational Tours***

# Wellsboro Area School District Educational Travel Program



**Figure 1:**  
*EF's World Presence:*  
120 Cities, 50 Countries,  
612 Offices & Schools

## *Cuisine and Culture in Northern Italy*

June 2021

**Prepared for:** James Mack  
Wellsboro Area High School  
September 17, 2019

## *Your partner in global education*

As the **World Leader in International Education**, we've partnered with educators around the world for over 50 years to help students gain new perspectives and build skills for the future through experiential learning. We provide a range of travel programs—Educational Tours, Language Immersion & Culture Tours, Service Learning Tours, Global Student Leaders Summits, STEM (Science, Technology, Engineering & Math) Tours and Custom-Designed Tours—that help prepare students for the future by teaching them more about the world, themselves, and their place in the world. Combining the power of experiential learning with the thrill of global travel, our tours help students:

- Expand their knowledge of the world around them
- Understand new people, places, and cultures
- Discover more about themselves
- Grow more confident and independent

When students grow in these ways, they become more curious, more open-minded, and more excited about the future.

---

## *What we'll cover in this document*

Educational Travel.

### **PAGE**

1	Your partner in global education
2	Our commitment to education
3	Our commitment to safety
4	We'll handle the details
5	A day-by-day look at your tour
6-7	What your hotels will be like
8	What your meals will be like
9	Price details
10	Important final details

*Attached: A sample day-by-day detailed itinerary*

This proposal is property of EF Education First and the educator/school for which it was intended. Distributing, copying and/or sharing it are prohibited. The proposal, including pricing, is valid for the educator, tour and date(s) specifically mentioned herein. For additions, subtractions or modifications, please contact your EF Tour Consultant.

© 2019 EF Education First. For full terms and conditions visit [eftours.com/bc](http://eftours.com/bc).

## *Our commitment to safety*

Our demonstrated commitment to safety and risk management is proven with our preventative procedures and extensive measures taken to ensure each traveler's safety.

### **Worldwide presence**

As the largest international student travel organization, we have 612 schools and offices in 50 countries worldwide. With 52,000 EF staff and teachers in 115 countries, we're accessible wherever and whenever you need us.

### **Global Liability Insurance Plan**

- All EF Group Leaders are covered for the duration of their EF educational tour.
- EF's Commercial General Liability Insurance is provided by nationally recognized insurance companies with A.M. Best Ratings of A-.
- Group Leaders and their schools are covered by our \$50 million liability policy and customer payments are protected by a \$1 million customer protection plan.
- EF's Global Liability Insurance Plan allows for schools and districts to be added to the policy by written agreement. EF can provide a certificate of insurance that details coverage.

### **Global Travel Protection Plan**

Designed specifically with EF travelers in mind, teachers may add this comprehensive and affordable protection plan to their tours.

### **EF's Peace of Mind Program**

We understand that plans can change due to unforeseen circumstances. EF provides an exclusive Peace of Mind program to account for such situations. This program is automatically included for all travelers and can be enacted at the group level for any reason, including terrorism or other world events. Your Group Leader may choose from the following options:

#### *45 days or more prior to departure*

- Change the travel dates of your group's current tour
- Work with EF to modify your group's current tour or find a new tour
- Cancel your tour and all travelers will receive a transferrable travel voucher

#### *44 days or less prior to departure*

If any location(s) included in the group's tour itinerary is designated as a Travel Advisory Level 3 or 4 by the U.S. Department of State, your Group Leader may still choose any option from the section above.

### **Background Checks**

EF requires that all adults pass a criminal background check before traveling on our student tours. This requirement aligns with the process and expectations of many school districts for adults who volunteer in schools or chaperone school activities. EF works with a leading professional provider to conduct the background check through a secure process designed to identify only those specific individuals who could present a risk to student travelers while on tour.

Highly respected in the industry by:



## *Our commitment to education*

We believe the best way to help students gain new perspectives and build skills for the future is through experiential learning.

### **Accreditation**

EF is accredited, just like your school, and recognized by the following regional, national and international organizations: Middle States Association of Colleges and Schools (MSA-CES); Western Association of Schools and Colleges (WASC); Southern Association of Colleges and Schools (SACS-CASI) North Central Association (NCA-CASI); National Council for Private Schools Accreditation (NCPSA); and Accreditation International (AI).

### **A standard of excellence**

Our educational travel programs bring to life the knowledge and skills that are called for in many education initiatives, including:

- Partnership for 21<sup>st</sup> Century Skills (P21)
- International Baccalaureate – PYP, MYP, Diploma, IBCC
- Common Core State Standards for English Language Arts and Literacy in History/Social Studies, Science and Technical Subjects
- Global Competence Criteria—defined by the Asia Society and Council of Chief State School Officers
- Global Connection Standards in the National Curriculum Standards for Social Studies
- Culture and Connections Standards in the Standards for Foreign Language Learning
- Standards of Professional Learning—defined by Learning Forward

### **weShare: Personalized Learning**

Every tour comes with weShare, a personalized learning experience powered by students' curiosity. Using EF's guided learning model, students use their strengths to investigate an issue or topic that inspires them. They reflect on what they've learned through a post-tour project that gives even more meaning to travel—and can earn them academic credit.

### **Earning credit**

Students can earn credit by traveling on an EF tour and completing required coursework. We offer choices, so you can find the credit option that best fits you and your students' needs.

- Students in grades 6-12 can earn high school credit with weShare, EF's personalized learning experience, by developing an essential question to investigate on tour and creating a post-tour project. Successful course completion will earn students 0.5 elective high school credits.
- Students in grades 9-12 can earn university credit by completing a series of assignments and a final research project with EF's university partner, Southern New Hampshire University. Successful course completion will earn students 3.0 university credits.

### **Accredited by:**



## *We'll handle the details*

As your educational travel partner, we work with teachers, students and parents to ensure a seamless experience—before, during and after tour. In other words, we're with you every step of the way.

### **BEFORE TOUR**

#### **Support team and resources**

Dedicated Tour Consultants guide teachers through the planning process, while Local Representatives from your area work face-to-face to provide support. We give teachers their own personal tour website with helpful tools to share tour information, manage deadlines and more. In addition to online resources, we also provide an array of printed materials for teacher, students and parents.

#### **International Training Tours**

Ensuring teachers are fully prepared to lead an EF tour is our commitment to your school community. Through our blended learning model, all first-time EF Group Leaders receive complimentary international training. Conducted by EF personnel and experienced EF Group Leaders, the program includes online, classroom and experiential learning components. In the event a Group Leader cannot attend one of these complimentary tours, we offer live webinars to prepare them and answer questions before they travel.

#### **Traveler account management**

Our knowledgeable and friendly Customer Service Representatives help travelers and their parents with all billing transactions, protection plans and tour activity questions. We also offer flexible and convenient payment options that allow parents to choose when—and how—they want to pay.

---

### **WHILE ON TOUR**

#### **Everything is included**

This all-inclusive global experience makes it easy for teachers and students to explore the world. From flights and hotels to most meals and experiential activities, we take care of every detail so travelers can focus on the experience.

#### **Guided travel**

A personal bilingual Tour Director stays with your group 24/7. They handle every on-tour detail to ensure a smooth travel experience while also providing unique local insight. Expert local guides, meanwhile, share their knowledge of history, art, architecture and more during guided tours.

---

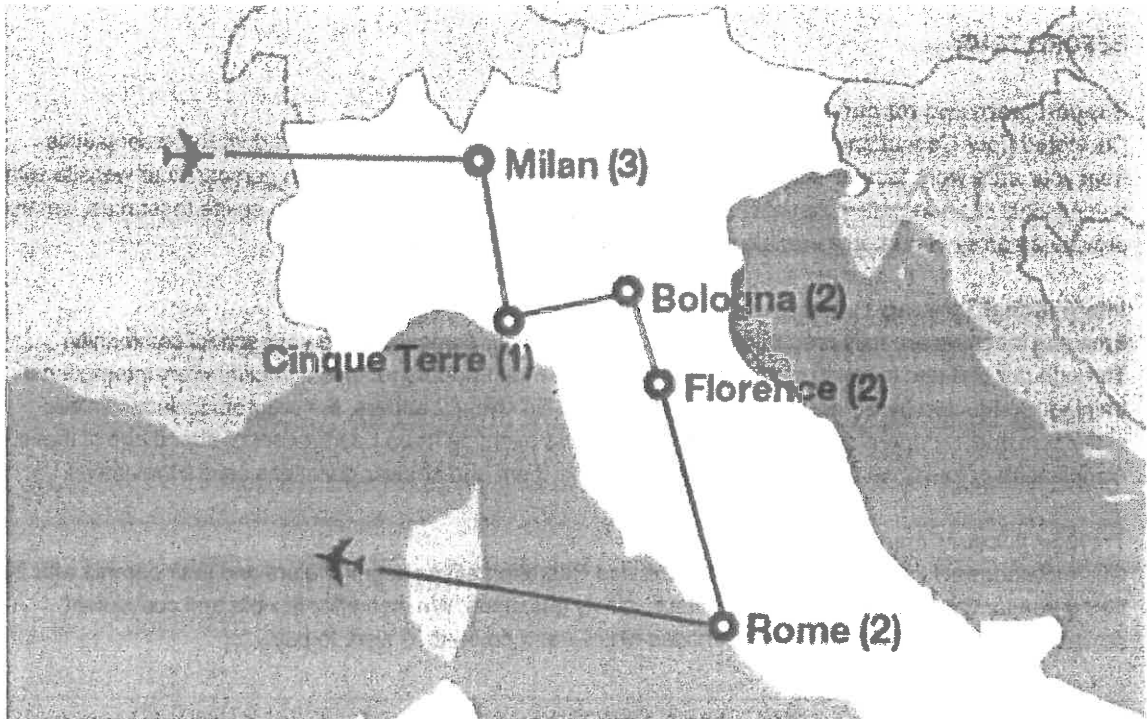
### **AFTER TOUR**

#### **Program development**

We'll work with you to build a travel program at your school so even more students have the opportunity to experience the world.

## *A day-by-day look at your tour*

*Below is a map of the general structure of your tour. For full day-by-day details, please reference the attached example tour itinerary.*



## *What your hotels will be like*

Every hotel we work with is required to meet our high standards for quality, safety and cleanliness. Three to four students of the same gender will share a room, which will have a combination of twin and shared double beds. Please be aware that hotels may have different amenities than you find in American hotels.

### **HERE ARE EXAMPLES OF THE TYPES OF HOTELS YOU'LL STAY AT ON TOUR:**

#### **Italy**

##### **Florence**

###### **Hotel Villa Saulina**

Via Maremmana, 11 50055 Lastra a Signa FI  
[www.villasaulina.it](http://www.villasaulina.it)

The Villa Saulina is situated in the rolling landscape of Tuscany, just 15km from Florence. Villa Saulina has several quaint farmhouses immersed within its tranquil gardens, featuring a grand manor house dating back to 1800. Having recently been renovated, the manor house keeps with the traditional characteristics of by-gone days and the Tuscan country lifestyle. The manor house has a fabulous restaurant, where guests can enjoy traditional local cuisines, all carefully prepared using only the finest locally produced ingredients.

#### **Italy**

##### **Rome**

###### **Quality Hotel Green Palace**

Via Salaria, 207, 00015 Monterotondo  
[www.qualitygreenpalace.it/](http://www.qualitygreenpalace.it/)

The Quality Hotel Green Palace is situated in the town of Monterotondo, a picturesque community boasting views of the Tevere River and easy access to Rome by train. This modern 4-star property features elegant rooms equipped with all the modern comforts: air conditioning, satellite television, hair dryers and free access to Wi-Fi.

#### **Italy**

##### **Rome**

###### **Hotel Excel Ciampino**

Via Appia Nuova, 160 Rome  
[www.excelciampino.it](http://www.excelciampino.it)

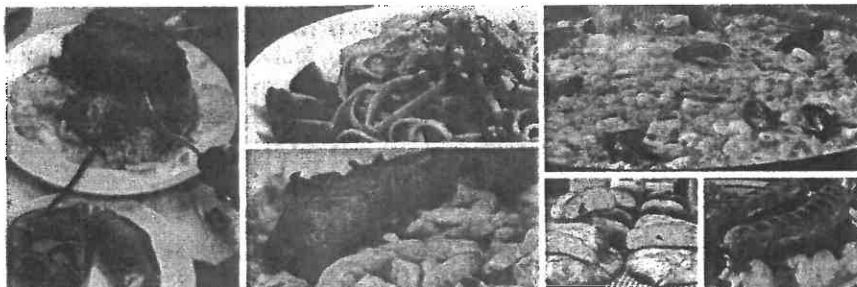
The Hotel Excel Ciampino is located approximately 12 miles southeast of Rome in the Castelli Romani region, once a favorite destination for popes and patrician families. The hotel, which consists of two adjacent buildings, features beautiful gardens for guests to enjoy. Each of the hotel's 79 elegant rooms includes air conditioning, satellite television, telephone, hair dryer and free Wi-Fi access.

## *What your meals will be like*

These are examples of the types of meals you and your students will be served on tour.

## Sample Menus: Europe

Discovering new foods can be one of the best parts of traveling. The sample menus below are just a few examples of the types of traditional, local favorites you will have the opportunity to try on tour. Every meal will include table water (or bottled water if deemed necessary by locals) and you can usually buy other beverages if you wish. All meals are served as a group—not à la carte—and a vegetarian option will be available if requested in advance. Please notify EF of any other dietary restrictions or food allergies you may have. Enjoy!



### AUSTRIA

Soup  
Wiener schnitzel  
Chocolate cake

### CZECH REPUBLIC

Soup  
Goulash  
Ice cream

### FRANCE

Menu 1  
Cheese quiche  
Turkey with rice, sauce,  
mushroom and beans  
Apple tart

### Menu 2

Salad  
Flammekueche  
Chocolate mousse

### Menu 3

Couscous with  
vegetables and meat  
Fruit salad

### GERMANY

#### Menu 1

Pretzel with  
cream cheese  
Turkey with  
spätzle dumplings  
Fruit

#### Menu 2

Vegetable soup  
Bratwurst with kraut  
and mashed potatoes  
Ice cream

### GREECE

#### Menu 1

Spinach pie  
Moussaka  
Rice pudding

#### Menu 2

Greek salad  
Chicken with oven-  
baked pasta  
Walnut pie

### ITALY

#### Menu 1

Tomato bruschetta  
Cannellini beans with  
garlic and sage  
Lasagna  
Gelato

#### Menu 2

Spaghetti with pesto  
Pork loin with spinach  
and potatoes  
Fruit salad

### IRELAND

#### Soup

Chicken with mashed  
potatoes and gravy  
Fruit salad

### SPAIN

Spanish Tortilla  
Pork loin with potatoes  
and mushrooms  
Ice cream

### SWITZERLAND

Soup  
Alpine Macaroni  
Chocolate mousse

### UNITED KINGDOM

#### Menu 1

Fish and chips  
Ice cream

#### Menu 2

Chicken and hummus  
Flan

#### Menu 3

Naan bread  
Chicken curry

### ICELAND

Meatballs, potatoes & brown sauce  
Fish balls with potatoes and butter  
Fried vegetables

## *Price details*

In addition to the support you receive before and after tour, along with the logistical support you receive on tour, your guaranteed lowest price covers all of the details.

<b>Program Price* <sup>1</sup></b>	<b>\$3,980</b>
------------------------------------	----------------

Includes:

- Round-trip airfare and on tour transportation
- Hotels with private bathrooms
- Breakfast and dinner (see your itinerary for meal details)
- Full-time Tour Director
- Daily activities, tours and entrances to attractions

<b>Global Travel Protection</b>	<b>\$165</b>
---------------------------------	--------------

<b>EF's Peace of Mind Program *</b>	<b>Free</b>
-------------------------------------	-------------

<b>Total for Students (under 20)</b>	<b>\$4,145</b>
21 monthly payments	\$193/mo

---

<b>Adult Supplement <sup>2</sup></b>	<b>\$600</b>
--------------------------------------	--------------

<b>Total for Adults</b>	<b>\$4,745</b>
21 monthly payments	\$222/mo

---

Quote created on 9/17/2019

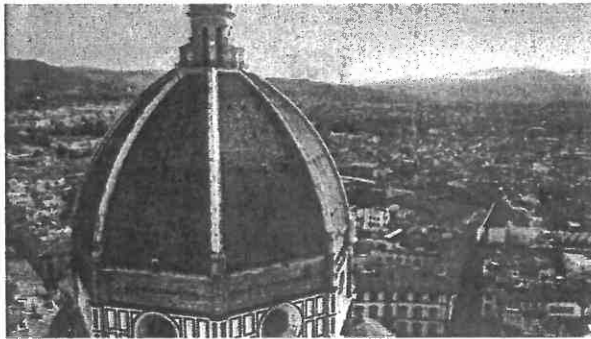
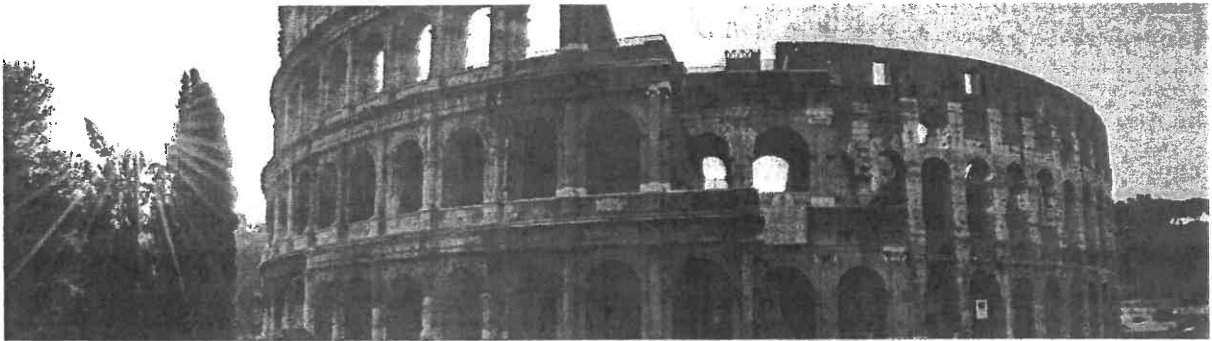
## *Important final details*

### **The EF Price Guarantee**

We're dedicated to making travel accessible to as many students as possible. Our unmatched global presence and longstanding relationship with airlines and hotels ensure you will always give your students the best experience at the lowest price, guaranteed.

What it means for you:

- The guaranteed lowest price—if you find a similar tour for less, we'll beat it.
- One simple price—no enrollment or departure fees.
- Once a student enrolls, their price will never change.



We've created this document specifically for you, your school, and your students. It outlines the details of your proposed tour and the life-changing experiential learning opportunities that await your students.

I look forward to hearing from you!

**Sincerely,**

Benjamin Harris

Educational Tour Consultant

570.843.3102

[benjamin.harris@EF.com](mailto:benjamin.harris@EF.com)